



The Greater Good

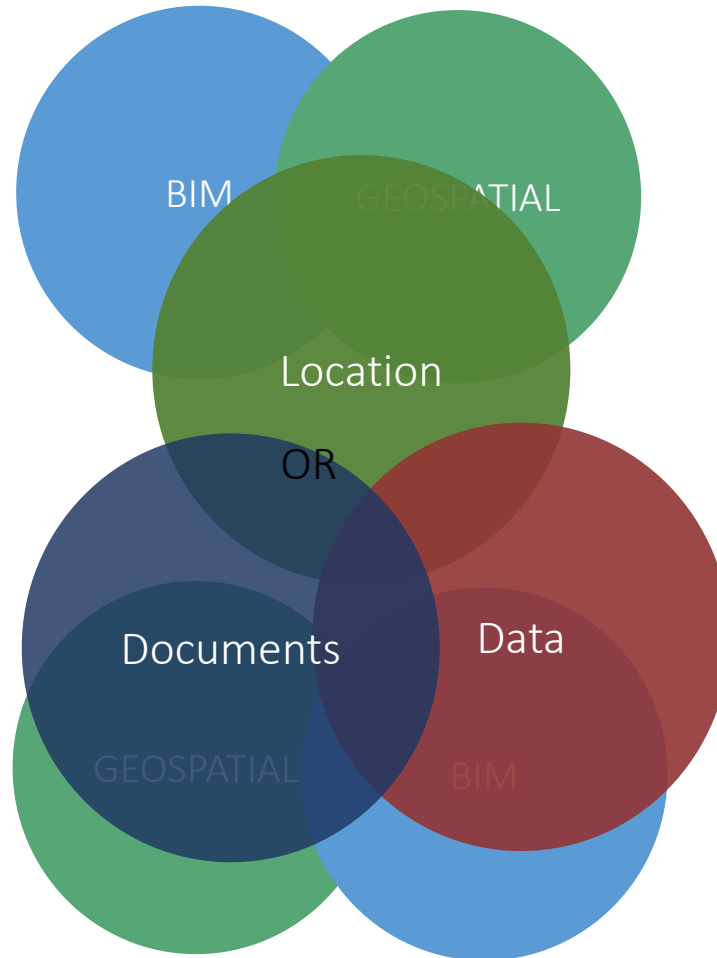
Realising the Benefits of Integrating BIM and GIS

Graeme Forbes, CEO, Clearbox

Clearbox



What is GeoBIM?



The differences



- Relate to data tied to location
- Constrained by being 2D
- Data is key
- Extensive Manual Process Required
- Works on true co-ordinates



- See everything in 3D within the model
- Constrained by lack of context
- Struggles to address data
- Extensive Manual Process required
- Works by relationship to origin



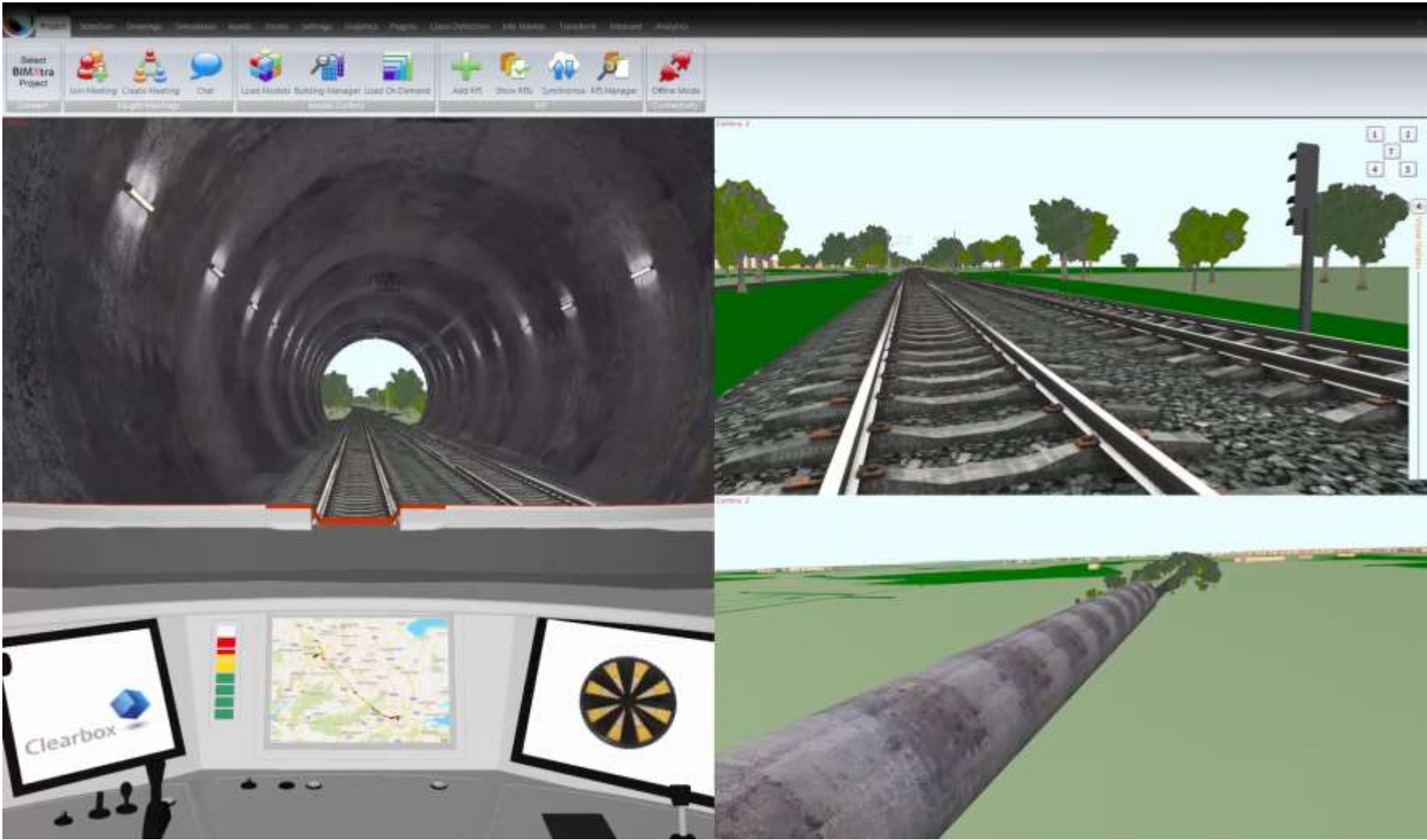
- Dominated by historical tools
- Constrained by asset numbers
- Struggles connecting data
- Extensive Manual Process
- Relationship with asset no

Why is integration important?

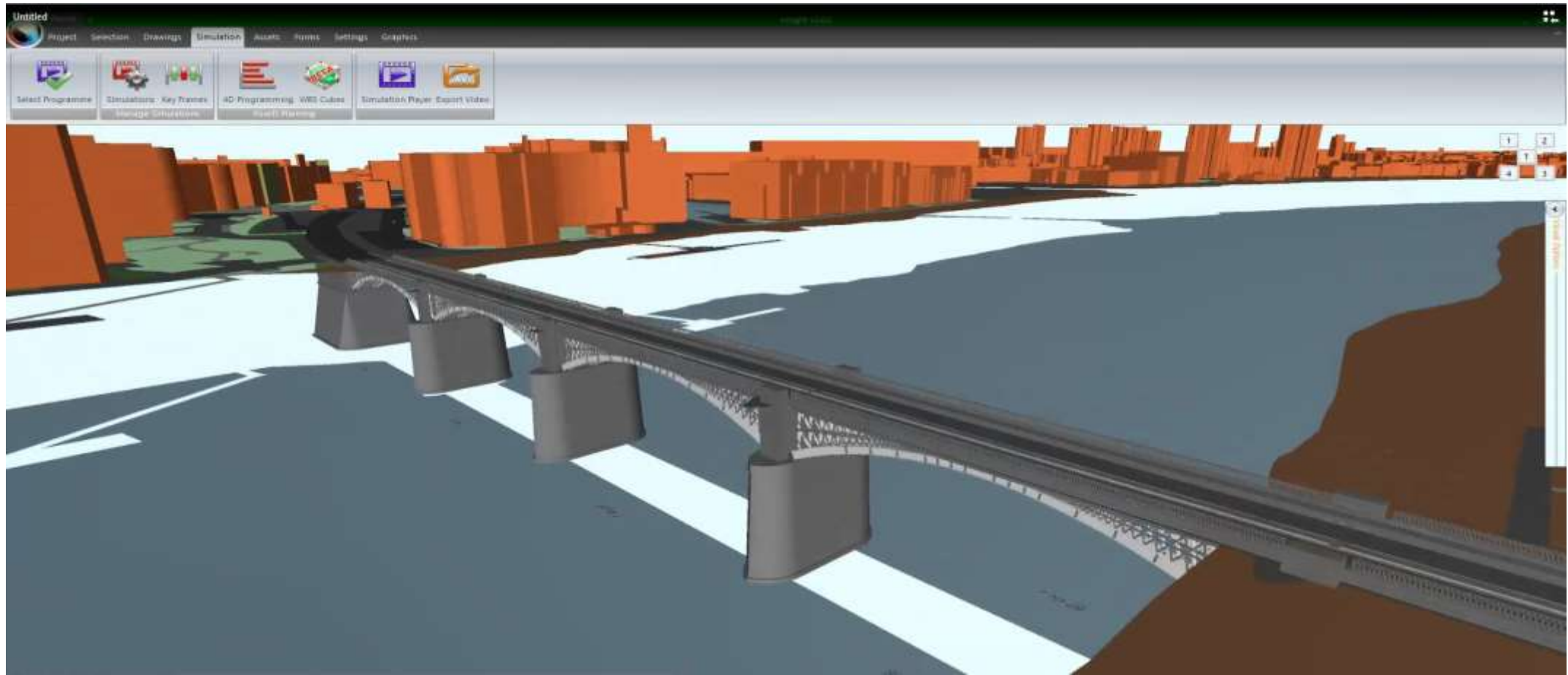
- Provides context - improved understanding
- Combines to provide a more representative and rich view
- Enables wider simulation and wider access in a more intuitive interface
- Provides the foundations for resilient and sustainable buildings and cities



Linear assets - video



Landmark - video



Retrospective application

Some of the techniques:



- Laser Scanning
- Lidar profiling



- Photogrammetry including capture by drones



- BIM/Digital translation



- Google – Maps and Street View



- Mapping Services

Appropriate to the required use of the information

Retrospective application - video



“The Greater Good”

