



# Omgevingswet NL & BIM

fully integrating spatial and environmental planning  
and permitting

Aart Jan Klijnjan

programma directeur Omgevingswet

Kadaster

**kadaster**

feitelijk verrassend



# Content

1. Introduction Omgevingswet (SEPA)
2. Information
3. BIM meets SEPA

Spatial & Environmental Planning Act = SEPA



# Content

1. Introduction Omgevingswet (SEPA)
2. Information
3. BIM meets SEPA

# Current situation



# future: Digitaal System SEPA



## 4x INTER:

- Intergrated approach
- Intergovernmental (4 gov levels)
- Interdisciplenairy (10 domains)
- Interaction (Dialog Stakeholders)

# Spatial Planning: Current situation

The screenshot displays the Ruimtelijkeplannen.nl website interface. At the top, the browser address bar shows 'ruimtelijkeplannen.nl'. The website header includes the title 'Ruimtelijkeplannen.nl' and navigation links for 'Particulieren' and 'Ga naar professionals'. Below the header, there are tabs for 'Home' and 'Een plan bekijken', along with 'Help', 'FAQ', and 'Contact' links. The main content area features a map of Emmen, Drenthe, with various planning zones overlaid in different colors. A search filter on the left allows users to search by location, with 'Emmen Emmen Drenthe' entered. The current selection is 'Emmen', 'Gemeente Emmen', and 'Provincie Drenthe'. A plan filter is also visible, with 'Gerelateerde plannen' selected. The right side of the map shows a detailed information panel for the plan 'Emmen, Centrum-Oost', including details such as 'planstatus: vastgesteld 2013-12-19', 'identificatie: NL.IMRD.0114.2010040-070', and 'type plan: bestemmingsplan'. The footer of the page reads 'Over Ruimtelijkeplannen.nl | Release notes'.



# BIM: leading principle for Building Info

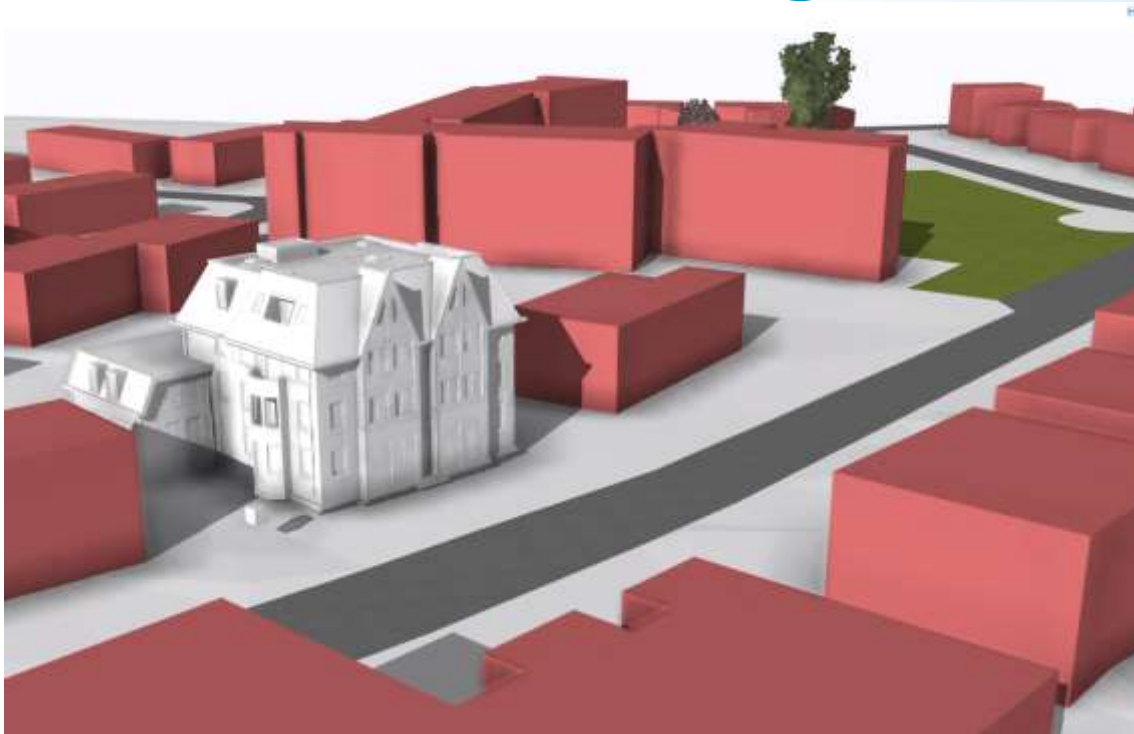
1. BIM is Consistant and Integral approach
2. BIM from overview to detail and back
3. BIM installed base and growing





# Spatial Planning: Future situation

## Using BIM and 3D GIS



# Partner

.....

**K-O-O-P**

Kennis- en Exploitatiecentrum  
Officiële Overheidspublicaties

 UNIE VAN  
WATERSCHAPPEN  
*Het Waterschapshuis*

 Rijkswaterstaat  
Ministerie van Verkeer en Waterstaat

 Rijksinstituut voor Volksgezondheid  
en Milieu  
Ministerie van Volksgezondheid,  
Welzijn en Sport

kadaster  


  
GEONOVUM

 VNG  
Vereniging van  
Nederlandse Gemeenten

 KING  
KWALITEITS  
INSTITUUT  
NEDERLANDSE  
GEMEENTEN

