



Rijkswaterstaat  
Ministry of Infrastructure  
and Water Management

# Rijkswaterstaat

## Challenges of Open BIM

Maike Beerepoot  
Program manager BIM



# Rijkswaterstaat in a nutshell

- We manage and develop three national infrastructure networks



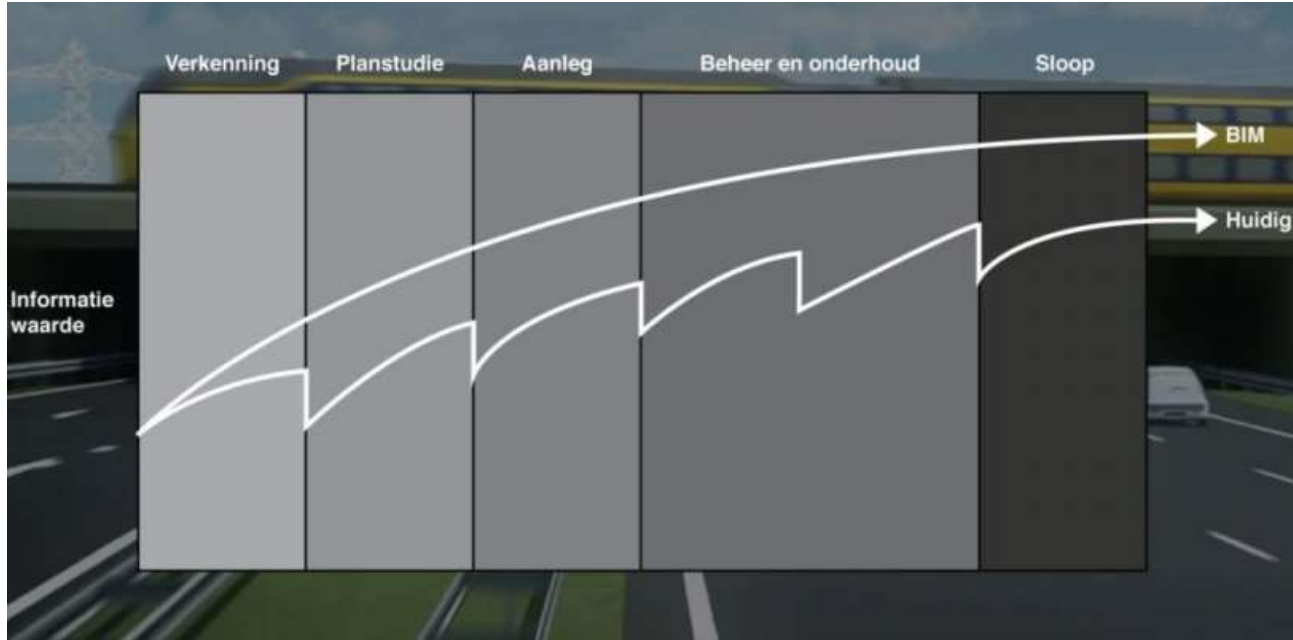


## Facts and figures

- 9,000 employees
- 7 regional organisational units, 7 nationwide organisational units
- Annual budget: around 5 billion euro
- Cooperation with provinces, municipalities, market actors, research institutes, etc
- Since 1798



# RWS – BIM approach



ILS



OTL



VISI



COINS







# BIM is about people

## Rol van het model: BIM piramide

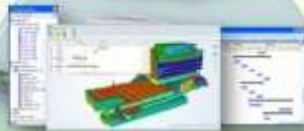
### Modelleurs

- Constructief
- Installatie
- Architectuur
- Electra
- ...



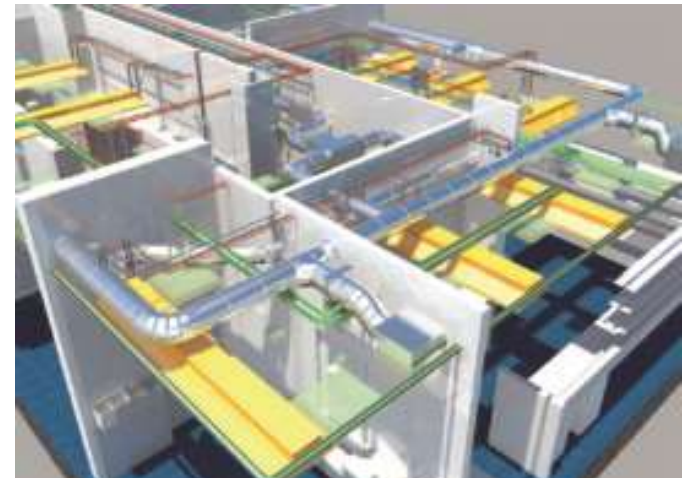
### Proces-engineers

- Planning
- Classificatie
- Logistiek
- Veiligheid
- ....



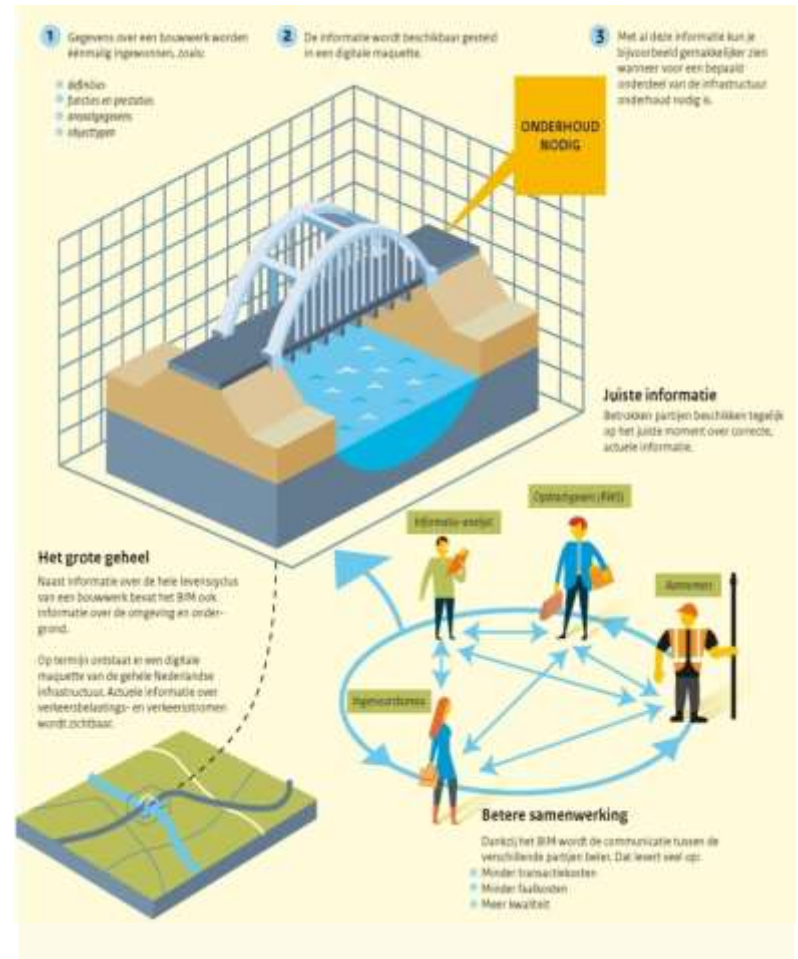
### Informatie gebruikers

- Kijken
- Controleren
- Commentaar
- Goedkeuring
- Status
- Terugkoppeling
- ...



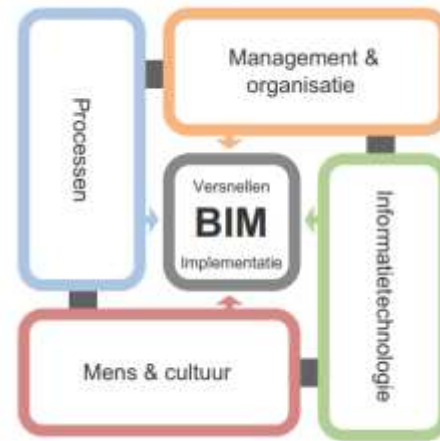
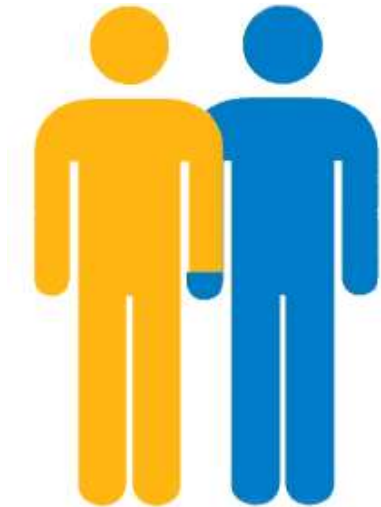


# It's not a greenfield





# Further development of the BIM standards



ILS



OTL



VISI



COINS